

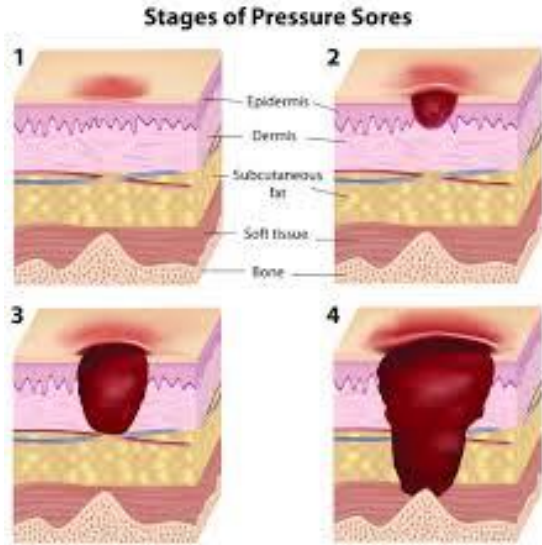
# STAGES OF BED SORES

Injuries to the skin and underlying tissue,  
primarily caused by prolonged pressure on the  
skin

# SYNONYMS

- Pressure sores
- Pressure ulcers

# 4 STAGES

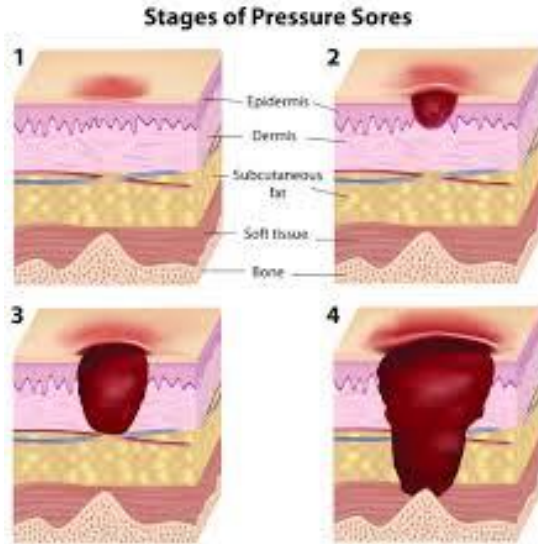


## Stage 1

Non-blanchable redness of intact skin, typically over a bony prominence



# 4 STAGES

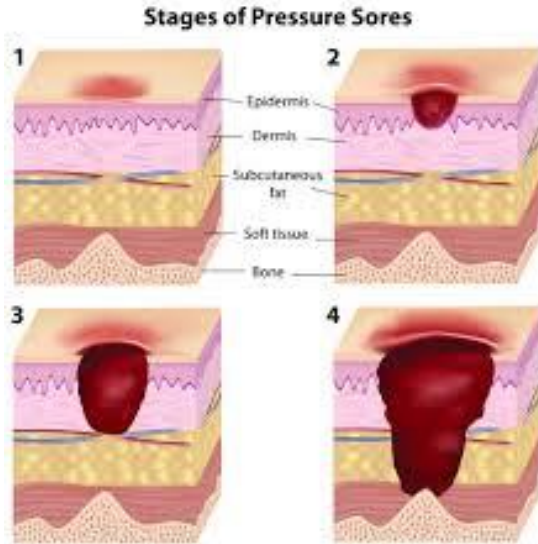


## Stage 2

- Partial thickness loss of dermis presenting as a shallow open ulcer with a red/pink wound bed, without slough
- Intact or open/ ruptured sero-sanguinous blister



# 4 STAGES



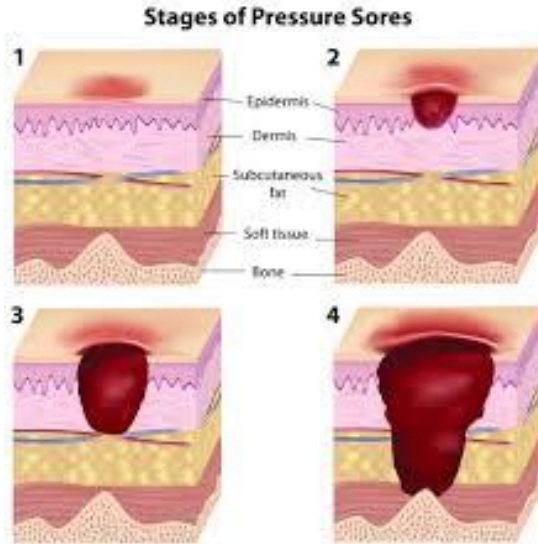
## Stage 3

Full thickness skin loss with visible subcutaneous fat.

Bone, tendon, or muscle are not exposed



# 4 STAGES



## Stage 4

Full thickness tissue loss with exposed bone, tendon, or muscle



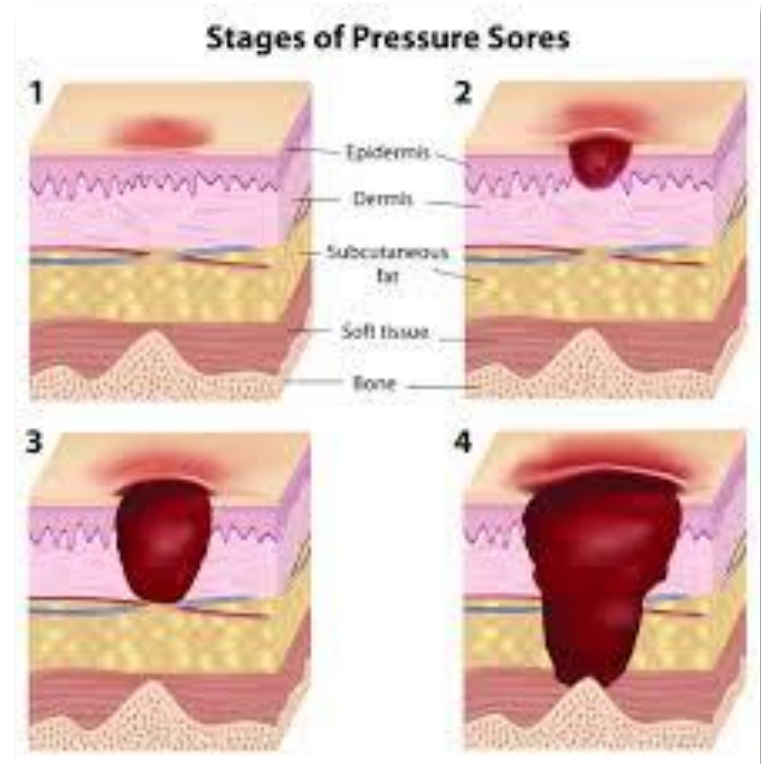
# 4 STAGES

**Stage 1:** Limited to epidermis. Just discoloration, no skin breach

**Stage 2:** Partial thickness loss of dermis, as or intact or ruptured blister

**Stage 3:** Full thickness skin loss

**Stage 4:** Deeper involvement with exposure of muscle, ligaments and bones





**MRCP Guide**

LIKE, SHARE & SUBSCRIBE