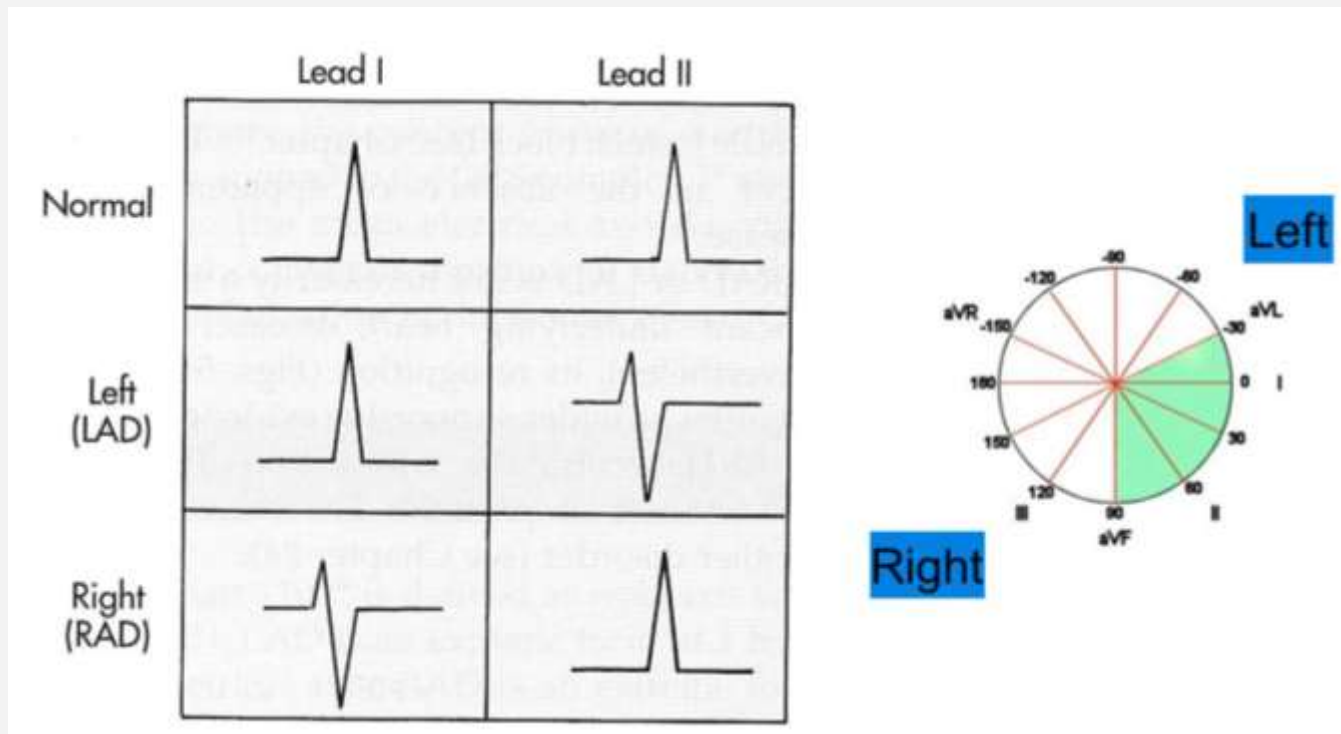
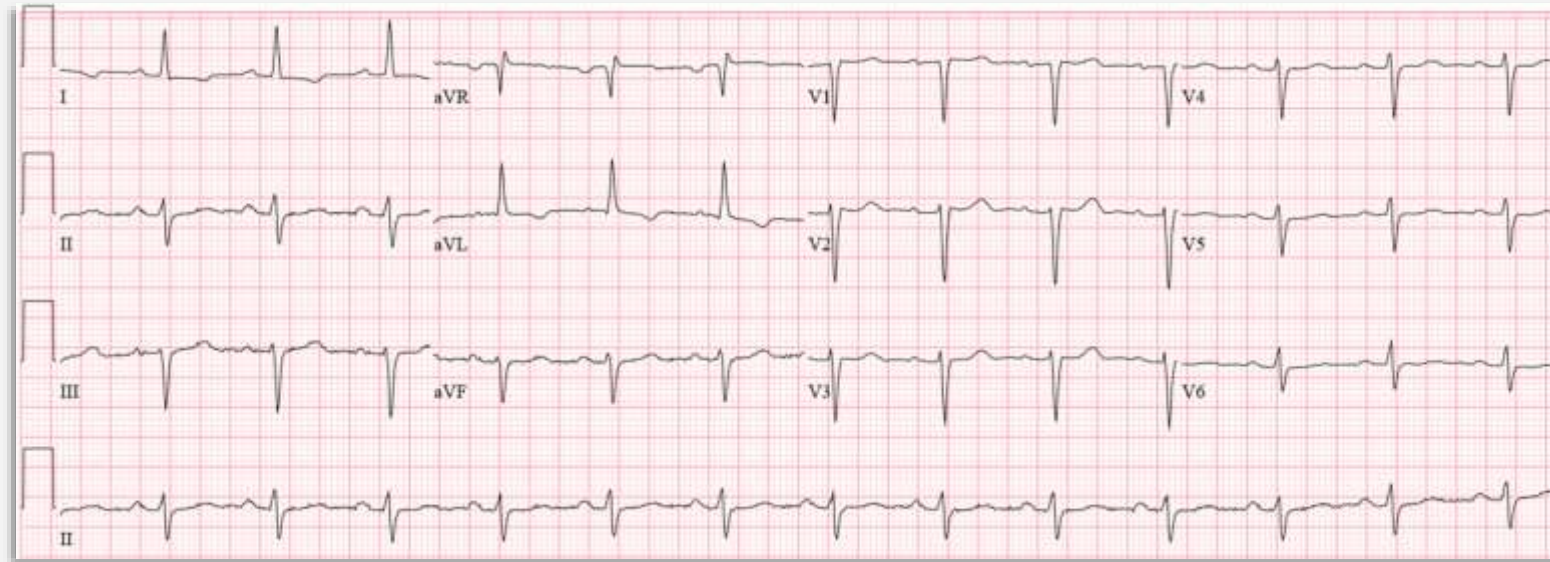


# Causes of Axes Deviation on ECG



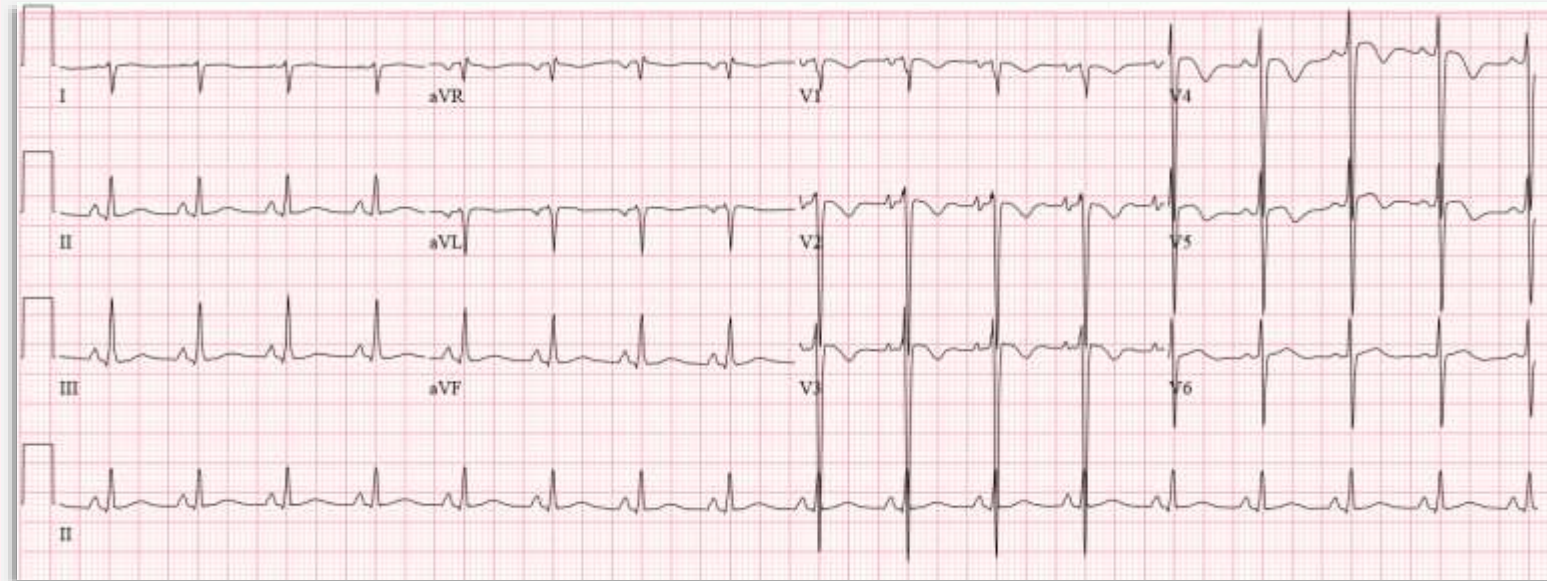
# Left Axis Deviation

- Left anterior hemiblock
- Left bundle branch block (LBBB)
- Inferior Myocardial Infarction
- Wolff-Parkinson-White syndrome - Right-sided accessory pathway
- Hyperkalemia
- Congenital: Ostium primum ASD, Tricuspid atresia
- Minor LAD in obese people



# Right Axis Deviation

- Right ventricular hypertrophy (RVH)
- Left posterior hemiblock
- Lateral Myocardial Infarction
- Cor pulmonale
- Pulmonary Embolism (PE)
- Ostium secundum ASD
- Wolff-Parkinson-White syndrome - Left-sided accessory pathway
- Minor RAD in tall people



*Like* *Share* *Subscribe*