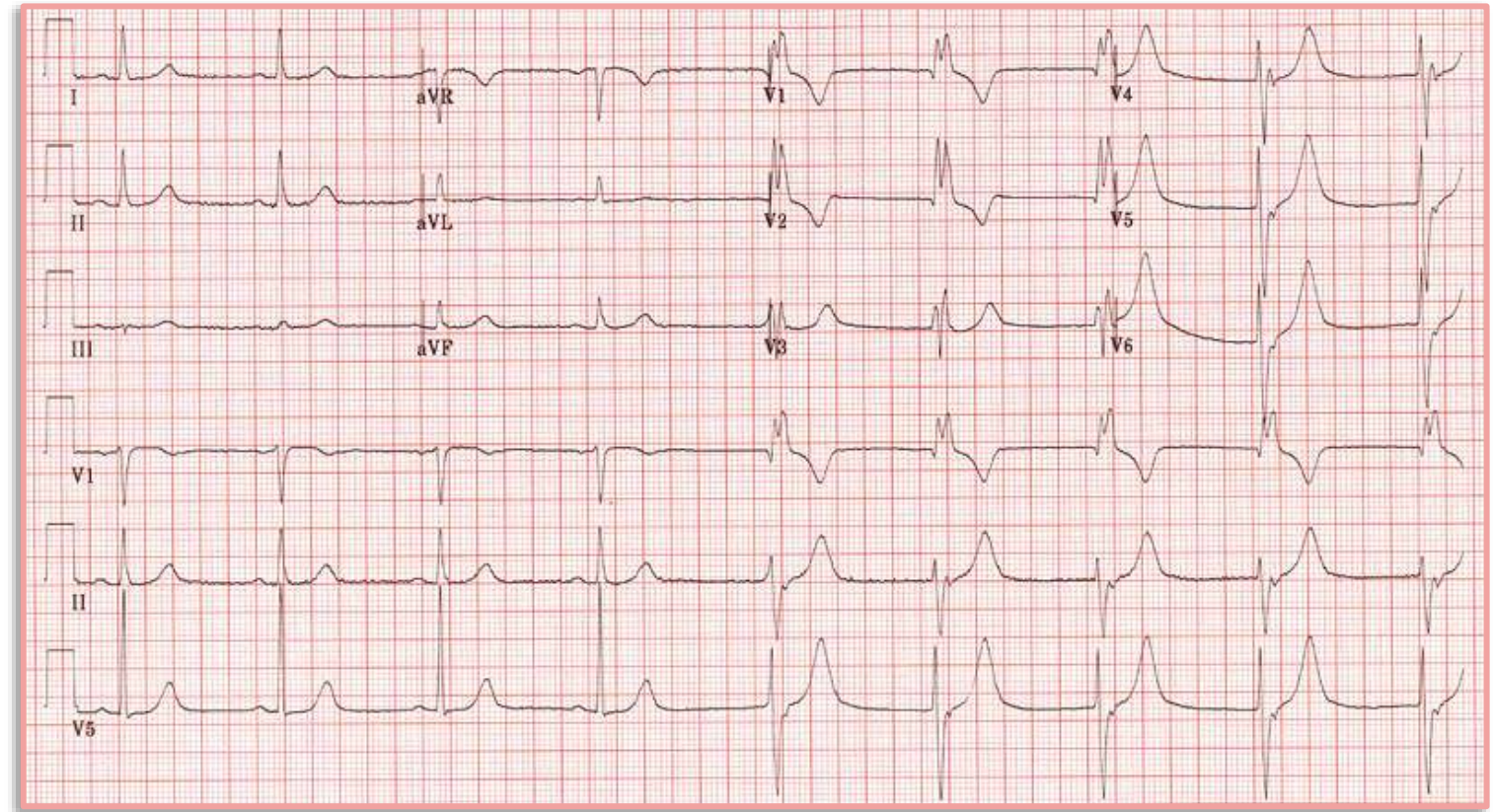


# Right Bundle Branch Block (RBBB)

## You will learn:

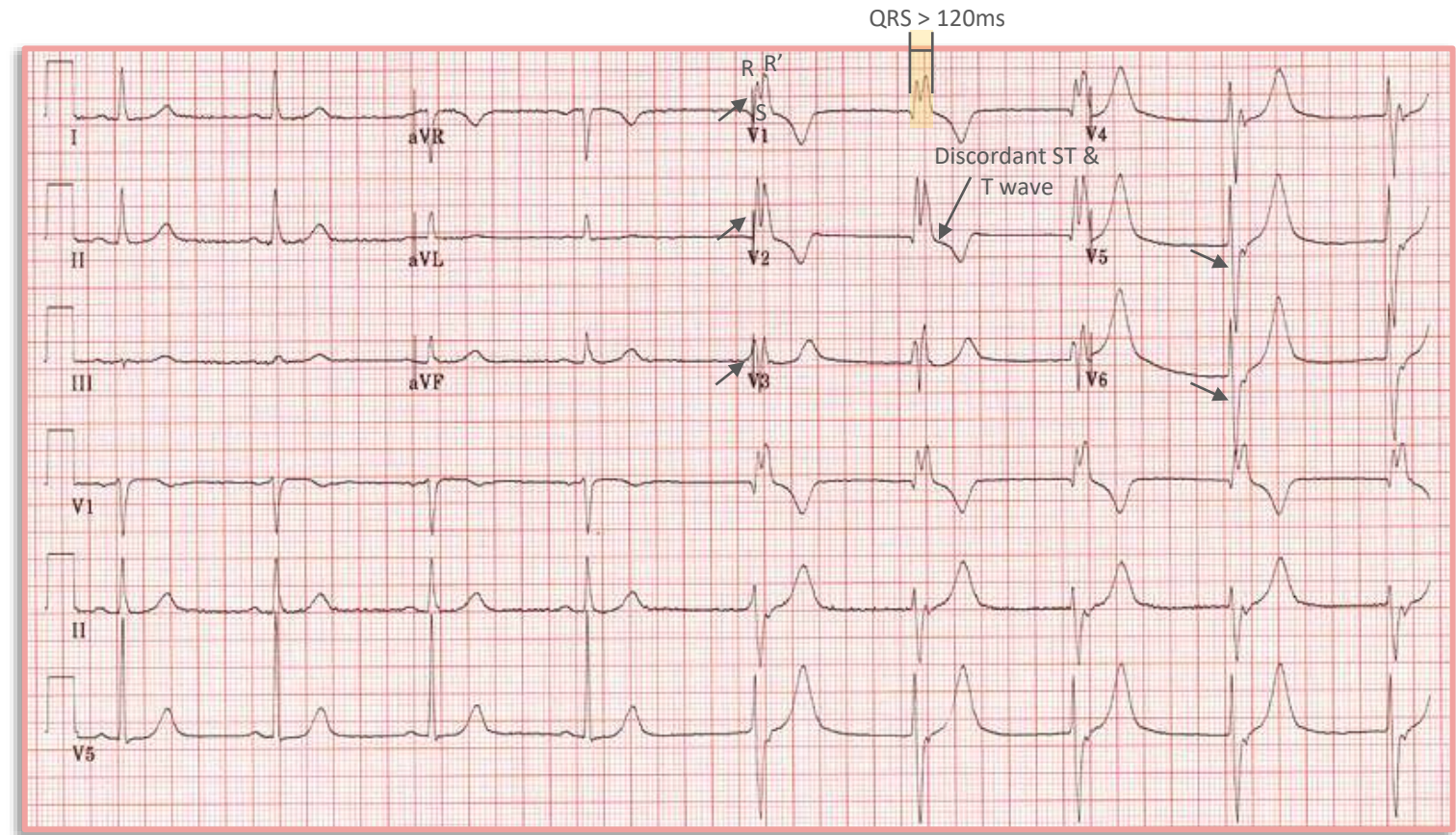
- ECG Features of RBBB
- Electrophysiology
- QRS & ST abnormalities in RBBB
- Conditions causing RBBB
- Differential Diagnosis



# Right Bundle Branch Block (RBBB)

## ECG Features

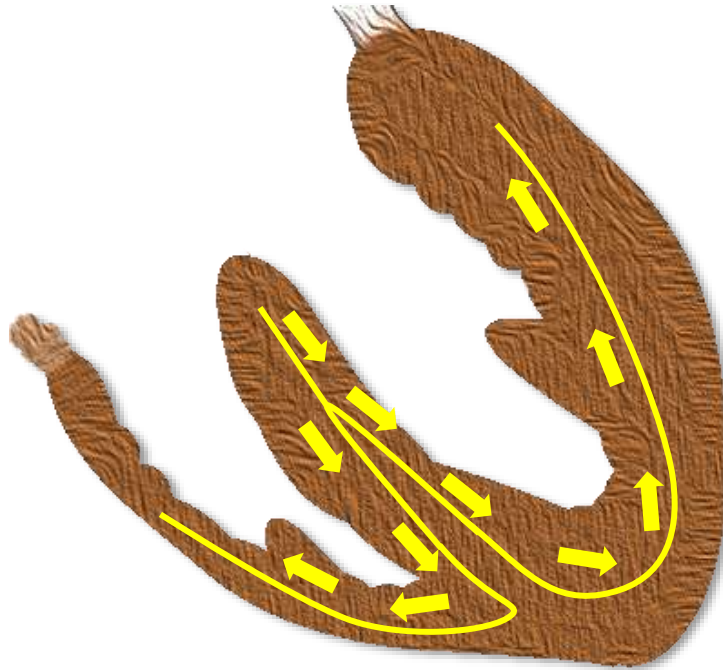
- i. QRS duration > 120ms (>3 small squares)
- ii. **Leads V1-V3** - RSR' or M-shaped
- iii. **Lead I, aVL, V5-V6** – Wide & slurred S wave
- iv. Appropriate discordance in V1-V3





# Right Bundle Branch Block (RBBB)

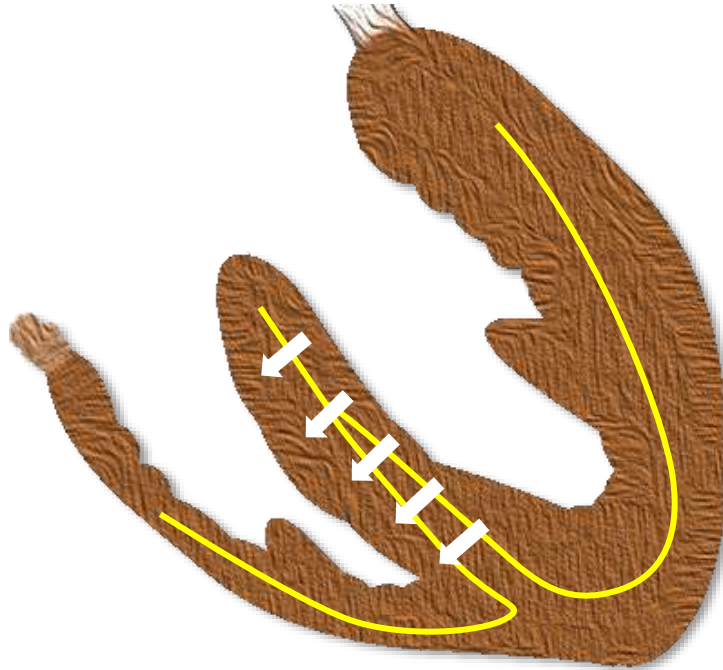
Electrophysiology



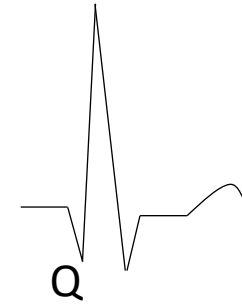
# Right Bundle Branch Block (RBBB)

Electrophysiology

V1-V3



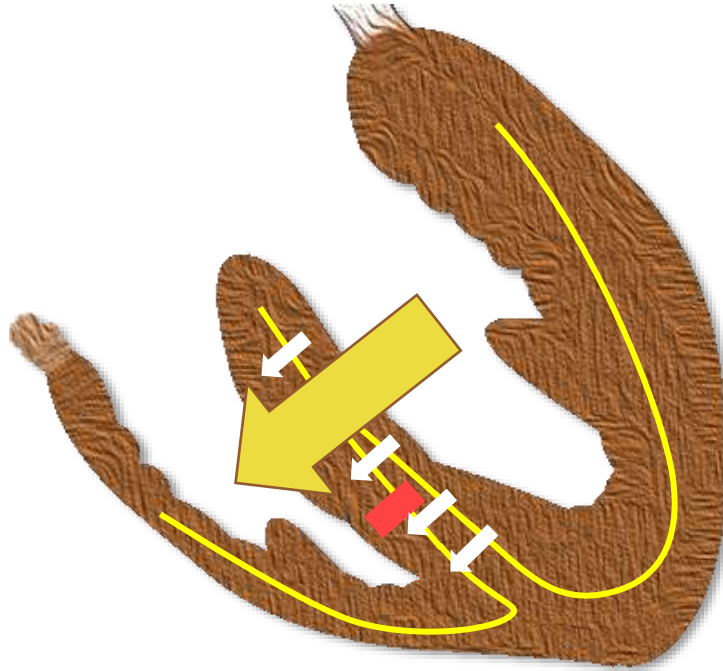
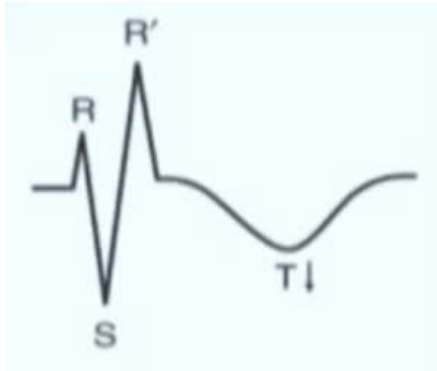
I, aVL, V5-V6



# Right Bundle Branch Block (RBBB)

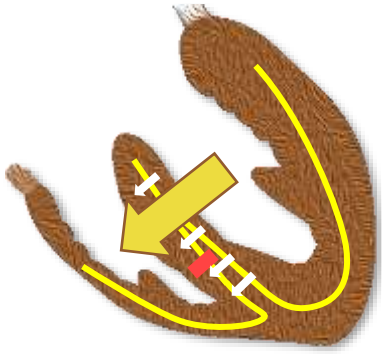
Electrophysiology

V1-V3



I, aVL, V5-V6





# Right Bundle Branch Block (RBBB)

**V1-V3**

**I, aVL, V5-V6**

**QRS Morphology**

RSR'

Monophasic R wave

qR wave

Wide, slurred S waves

**ST segment**

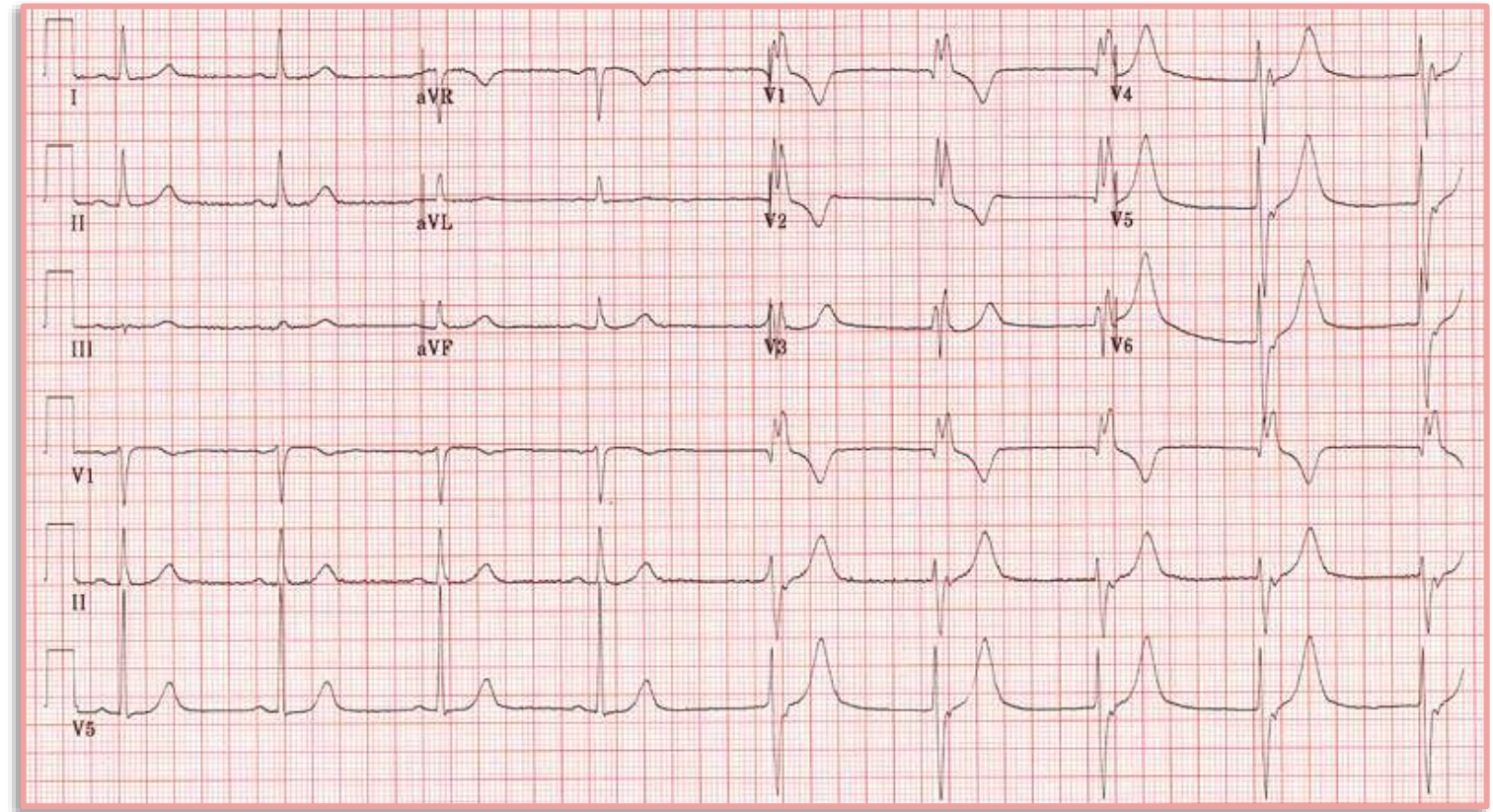
ST segment depression & T wave  
inversion

# Right Bundle Branch Block (RBBB)

## Causes

In the context of chest pain, a new right bundle branch block is highly concerning for Acute myocardial infarction, and a potential indication for immediate reperfusion therapy.

If there is concordance in anterior leads in right bundle branch block in patient with chest pain, it is suggestive of acute myocardial infarction

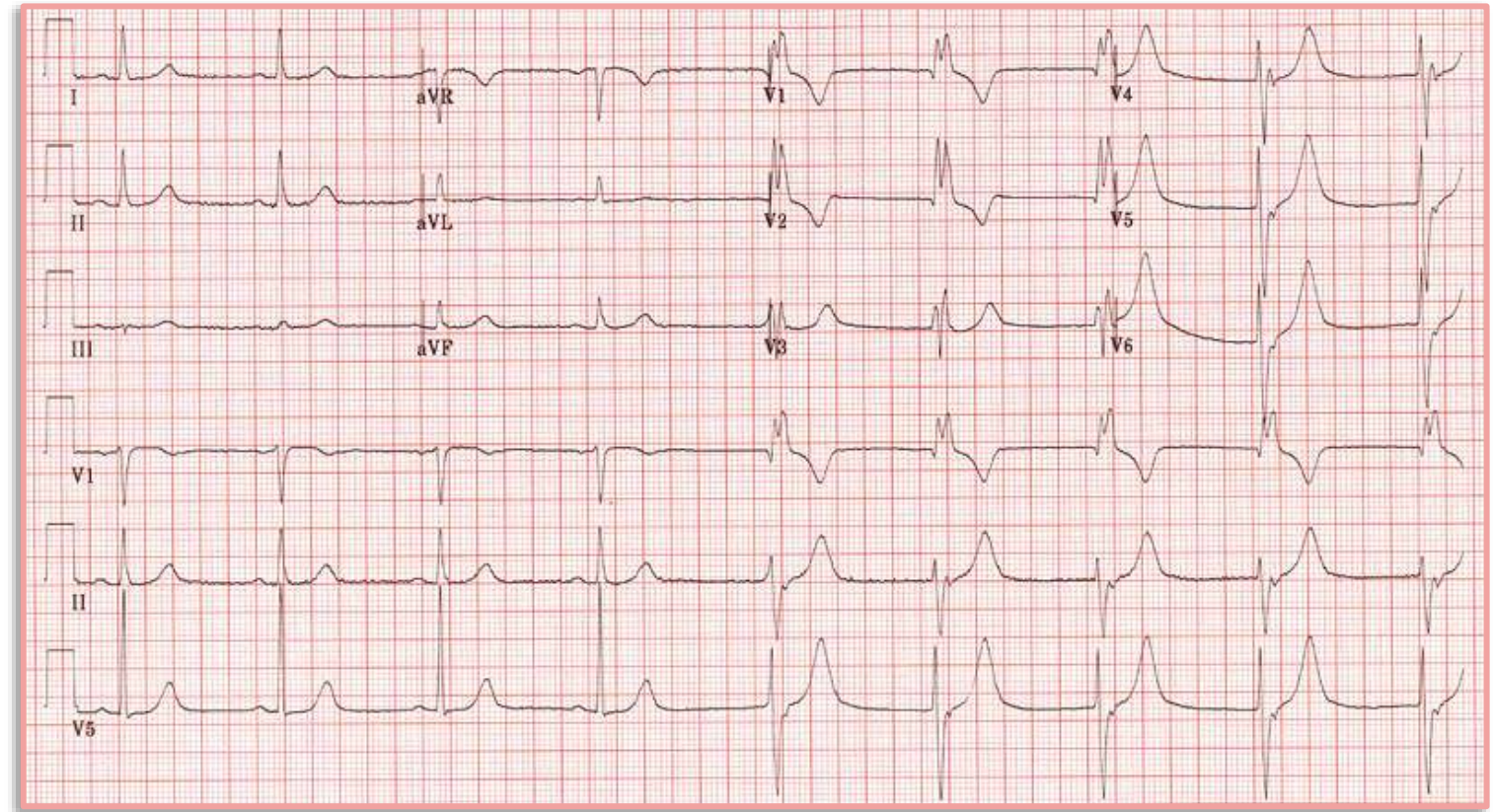




# Right Bundle Branch Block (RBBB)

## Causes

- Right ventricular hypertrophy / cor-pulmonale
- Pulmonary embolism
- Ischaemic heart disease
- Rheumatic heart disease
- Congenital heart disease (e.g., atrial septal defect)
- Myocarditis
- Cardiomyopathy
- Lenègre-Lev disease (primary degenerative disease of the conducting system)





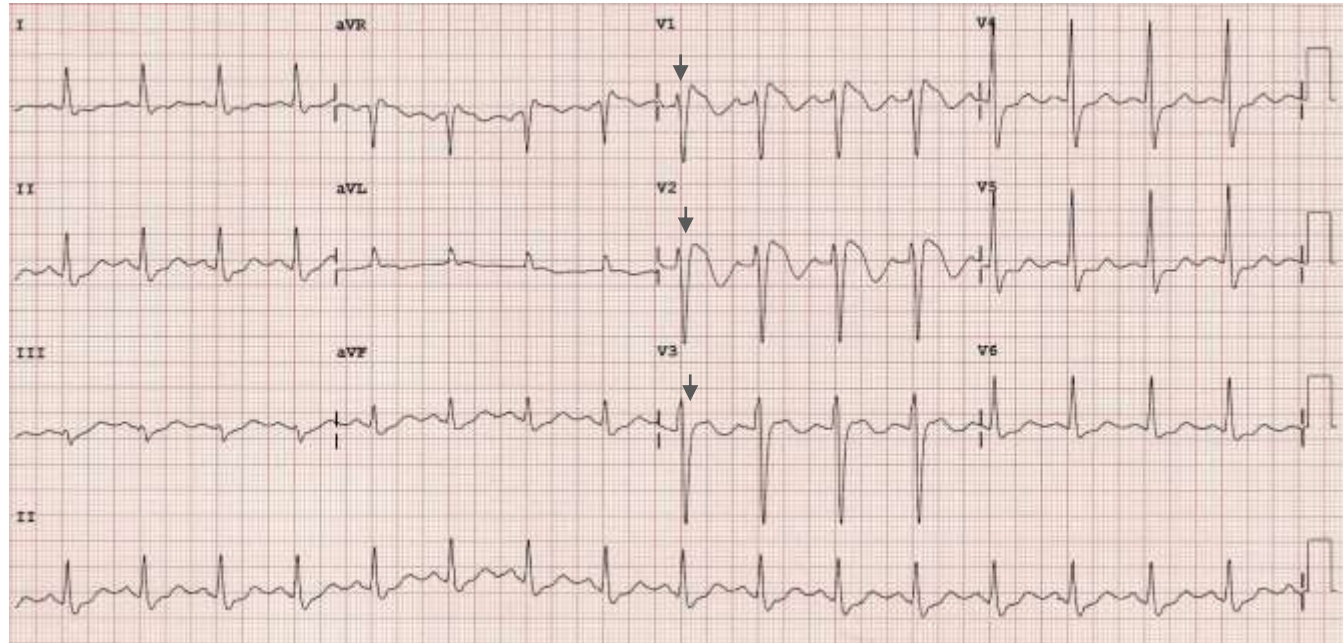
# Right Bundle Branch Block (RBBB)

## Differential Diagnosis

### Brugada Syndrome

RSR' pattern & Coved ST elevation

Patient prone to get Malignant ventricular arrhythmias



## Last Second Medicine

Like | Share | Subscribe